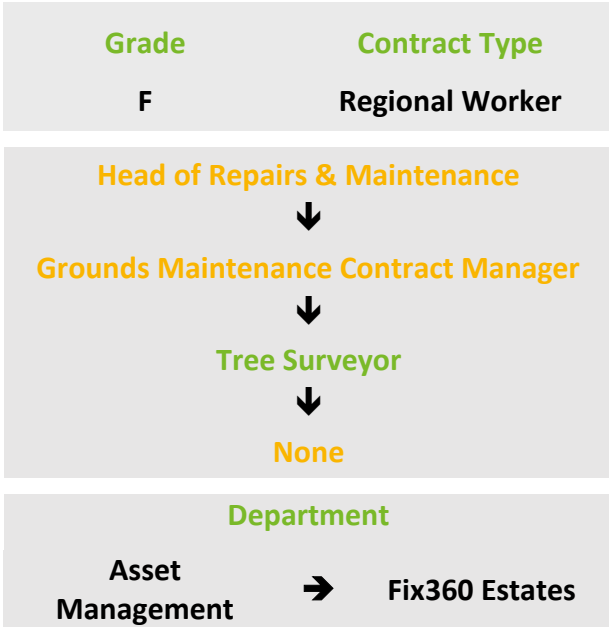


Tree Surveyor



Role Overview

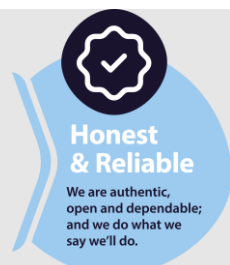
Survey, manage and recommend remedial works to trees under Your Housing Group's control.

Organise, arrange and monitor Arboriculture works through contractors on behalf of the Group and its residents/customers.

RESPONSIBILITIES

- Provide support in the development and delivery of the Estate Management policy and Tree Management procedure.
- Survey, assess condition and identify arboriculture works required to trees that the Group has responsibility for, ensuring detailed records are maintained.
- Issue and monitor instructions in relation to arboriculture works to contractors and manage the performance and quality of works carried out by the service providers.
- Assist with financial planning budget setting and optimisation for works related to YHG tree portfolio.
- Maintain and update the spatial Tree Stock Inventory on the teams Geographical Information System (GIS) project.
- Investigate tree related enquires and complaints received from residents and neighbours.
- Manage Health & Safety through management of risk, identify and report issues/breaches and effectively promote a safe work environment for all.

Our values



Creating more places for people to thrive and be recognised as a sector leading landlord

- Ensure Financial Standing Orders are followed and demonstrate value for money
- Adhere to Safeguarding Policy and procedure and, where appropriate, refer customers at risk to appropriate agencies/Local Authority
- Undertake additional duties appropriate to the role and/or grade.

STRENGTHS

- ✓ Problem solving, ensuring policies are followed
- ✓ Demonstrable ability to effectively engage with business stakeholders within the organisation
- ✓ Clear and articulate communication skills, both written & verbal
- ✓ Excellent IT skills with proficiency in Microsoft Office
- ✓ Ability to work autonomously with minimal supervision
- ✓ Excellent relationship building skills

ESSENTIAL REQUIREMENTS

- ✓ Current Arboriculture and Forestry techniques and practices
- ✓ Experience of Tree/Site inspections and report writing
- ✓ Experience in identification all common tree species, tree pests, diseases, and structural defects
- ✓ Experience of Tree Inventory & GIS Applications
- ✓ GCSE Maths and English (or equivalent) plus IOSH or suitable Managing Safely training/knowledge; higher educational arboriculture qualification
- ✓ Full UK Driving Licence and ability to travel around a specific geographical location to undertake site surveys

BENEFICIAL TO THE ROLE

- ✓ Use of own reliable vehicle
- ✓ Knowledge of Social Housing
- ✓ Foundation Degree in Arboriculture level 5 (or equivalent)
- ✓ Knowledge of bat legislation
- ✓ Tree Risk Assessments
- ✓ ROSPA Inspection Certification