

ROLE PROFILE

Joiner (Multi-skilled)

Grade

Contract Type

Director of Assets



Head of Repairs & Maintenance



Contract Manager



Department

Fix360



Fix360

Role Overview

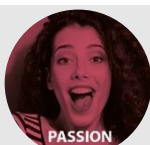
Carry out joinery work on maintenance, major and minor construction work, ensuring all work undertaken is completed with due regard for quality, productivity, and safety.

May be required to participate in the 'on call' rota for Your Housing Group, covering emergency out of hours repairs.

RESPONSIBILITIES

- Travel to designated properties, undertaking and completing work of all aspects of joinery / carpentry as Directed by your line manager, Supervisor, or scheduler
- Undertake all types of repairs, maintenance, refurbishment including damp and mould in a multitasked environment to several key trade disciplines
- Complete all tasks to an agreed quality, standard and timescale
- Always adhere to all safe systems of work and fully comply with Groups policies and procedures in regards to Health and safety.
- Ensure all IT devices and works issued are completed with full job-related information.
- Undertake appropriate training in line with the role.
- Carry out any other reasonable duties which may be identified by your manager
- Carry out all defects works within own capability
- Comply with all Group Policies and procedures
- Liaise with customers, colleagues, other trades, and Sub- contractors/ suppliers to complete all tasks to a high standard

Our values



Creating more places for people to thrive and be recognised as a sector leading landlord

STRENGTHS

- ✓ Organisational skills and ability to prioritise a busy and reactive workload
- ✓ Ability to be positive and flexible
- ✓ Ability to communicate effectively with colleagues and customers
- ✓ Ability to work alone and as part of a team

ESSENTIAL REQUIREMENTS

- ✓ Experience of completing and delivering response repairs and maintenance works
- ✓ Experience carrying out works of other trade roles in addition to Carpentry and Joinery
- ✓ Hold appropriate trade qualifications (NVQ / City and Guilds or equivalent)
- ✓ Full UK driving license
- ✓ Ability to demonstrate commercial acumen to aid decision making
- ✓ Ability to read drawings and specifications of manufacturers information
- ✓ Relevant sector knowledge

BENEFICIAL TO THE ROLE

- ✓ Able to use Technology such as mobile phones and PDAs.
- ✓ Experience and knowledge of using Key Performance indicators
- ✓ Proficient in the use of Microsoft office applications
- ✓ Social Housing experience