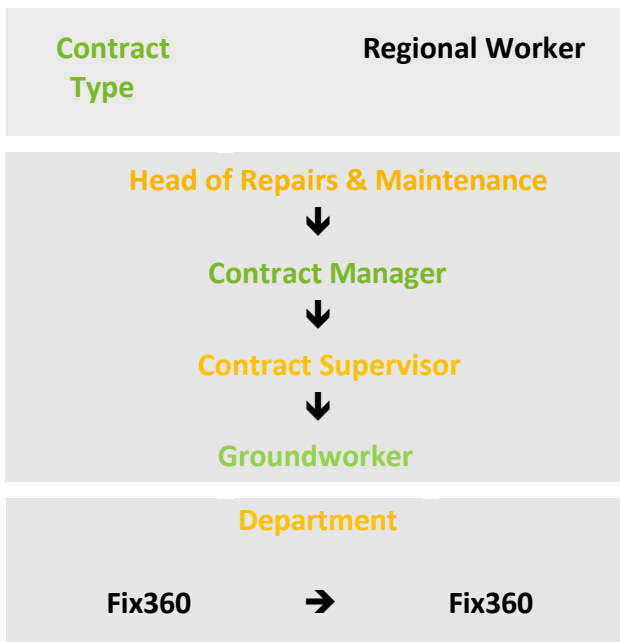


Groundworker/Bricklayer



Role Overview

Carry out Groundworks & Bricklaying work on maintenance, major and minor construction work, ensuring all work undertaken is completed with due regard for quality, productivity, and safety.

May be required to participate in the 'on call' rota for Your Housing Group, covering emergency out of hours repairs.

RESPONSIBILITIES

- Travel to designated properties, undertaking and completing work of all aspects of Groundwork & Bricklaying works as directed by your line manager, Supervisor, or scheduler
- Undertake all types of repairs, maintenance and refurbishment tasks
- Complete all tasks to an agreed quality, standard and timescale.
- Always adhere to all safe systems of work and fully comply with Groups policies and procedures in regard to Health and safety.
- Ensure all IT devices and works issued are completed with full job-related information.
- Undertake appropriate training in line with the role.
- Carry out any other reasonable duties which may be identified by your manager.
- Carry out all defects works within own capability.
- Comply with all Group Policies and procedures
- Liaise with customers, colleagues, other trades, and Sub- contractors/ suppliers to complete all tasks to a high standard

Our values



Honest & Reliable
We are authentic, open and dependable; and we do what we say we'll do.



Caring
We show kindness and consideration to our customers and each other.



Respectful & Fair
We listen to people, and strive for equity and inclusivity in all that we do.

STRENGTHS

- ✓ Organisational skills and ability to prioritise a busy and reactive workload
- ✓ Ability to be positive and flexible
- ✓ Ability to communicate effectively with colleagues and customers
- ✓ Ability to work alone and as part of a team

ESSENTIAL REQUIREMENTS

- ✓ Experience of completing and delivering responsive repairs and maintenance works
- ✓ Experience carrying out works of other trade roles in addition to Groundworks
- ✓ Hold appropriate trade qualifications (NVQ / City and Guilds or equivalent)
- ✓ Full UK driving license
- ✓ Ability to demonstrate commercial acumen to aid decision making
- ✓ Ability to read drawings and specifications of manufacturers information
- ✓ Relevant sector knowledge

BENEFICIAL TO THE ROLE

- ✓ Able to use Technology such as mobile phones and PDAs.
- ✓ Experience and knowledge of using Key Performance indicators
- ✓ Proficient in the use of Microsoft office applications
- ✓ Social Housing experience