

Data Analyst – Energy & Sustainability

Grade

F

Head of Asset Strategy & Planning



Energy & Sustainability Manager



Data Analyst – Energy & Sustainability



No direct reports

Department

Asset → E&S Team

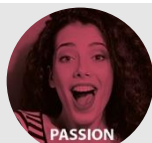
Role Overview

Process analyse and monitor complex asset data relating to energy and sustainability to enable the management team to develop long term E&S and investment strategies.

RESPONSIBILITIES

- Analyse and interpret large and complex data sets relating to asset energy data
- Prepare reports, data dashboards, graphs and visualisations
- Identify, evaluate and implement external services and tools to support data validation and cleansing
- Monitor and audit data quality
- Work collaboratively with other teams and systems to identify inefficiencies in planned asset upgrades
- Organise and transform information into comprehensible structures
- Monitor and record data relating to the company's carbon emission tracking
- Perform statistical analysis of data
- Maintain accurate record of continually changing data sets.
- Monitor and record remote energy generation data from sites where renewable energy technologies are installed
- Undertake additional duties appropriate to the role and/or grade.

Our values



Creating more places for people to thrive and be recognised as a sector leading landlord

STRENGTHS

- Ability to effectively multi-task, maintaining accuracy and attention to detail
- Positive “can do” attitude and pragmatic approach to problem solving
- Clear and articulate communication skills, both written & verbal
- Excellent IT skills with proficiency in Microsoft Office
- Ability to work autonomously with minimal supervision from home or our head office
- Excellent relationship building skills

ESSENTIAL REQUIREMENTS

- ✓ Effective time management skills with ability to work under pressure to meet deadlines
- ✓ Excellent numerical and analytical skills
- ✓ knowledge of data modelling, data cleansing, and data enrichment techniques
- ✓ Advanced Microsoft Excel Skills
- ✓ Education to A level (or equivalent)
- ✓ Experience using asset management tools and systems

BENEFICIAL TO THE ROLE

- ✓ Experience of working in the social housing sector
- ✓ An awareness and understanding of EPC/SAP data
- ✓ An understanding of industry and mandated obligations relating to E&S
- ✓ Experience with intelligent energy systems such as SAVA
- ✓ Relevant Professional & Energy Qualifications
- ✓ Education to Degree level (or equivalent)