

## ROLE PROFILE

# Tree Surveyor

### Grade

F

**Commercial Manager – Asset Management**



**Regional Contract Manager – Asset Management**



**Tree Surveyor**



**None**

### Department

**Asset Management**



**Repairs & Maintenance**

### Role Overview

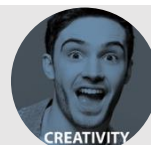
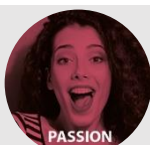
**Survey, manage and recommend remedial works to trees under Your Housing Group's control.**

**Organise, arrange and monitor Arboriculture works through contractors on behalf of the Group and its residents/customers.**

## RESPONSIBILITIES

- Provide support in the development and delivery of the Estate Management policy and Tree Management procedure.
- Survey, assess condition and identify arboriculture works required to trees that the Group has responsibility for, ensuring detailed records are maintained.
- Issue and monitor instructions in relation to arboriculture works to contractors and manage the performance and quality of works carried out by the service providers.
- Assist with Financial planning budget setting and optimisation for works related to YHG tree portfolio.
- Maintain and update the spatial Tree Stock Inventory on the teams Geographical Information System (GIS) project.
- Investigate tree related enquires and complaints received from residents and neighbours.
- Manage Health & Safety through management of risk, identify and report issues/breaches and effectively promote a safe work environment for all.
- Ensure Financial Standing Orders are followed and demonstrate value for money.
- Adhere to Safeguarding Policy and procedure and, where appropriate, refer customers at risk to appropriate agencies/Local Authority.
- Undertake additional duties appropriate to the role and/or grade.

## Our values



Creating more places for people to thrive and be recognised as a sector leading landlord

## STRENGTHS

- Demonstrable problem solving skills
- Good organisation skills, with ability to maintain recording systems.
- Clear and articulate communication skills, both written & verbal
- Excellent IT skills with proficiency in Microsoft Office
- Ability to work autonomously with minimal supervision
- Excellent relationship building skills

## ESSENTIAL REQUIREMENTS

- ✓ Current Arboriculture and Forestry techniques and practices
- ✓ Experience of Tree/Site inspections and report writing
- ✓ Contract Management experience
- ✓ Lantra 3 day Professional Tree Inspection Certificate
- ✓ Ability to travel around a specific geographical location to undertake site surveys
- ✓ Experience of Tree Inventory & GIS Applications
- ✓ Experience in identification of tree pests, diseases and structural defects
- ✓ Ability to identify all common tree species
- ✓ GCSE Maths and English (or equivalent)
- ✓ Higher education arboriculture qualification

## BENEFICIAL TO THE ROLE

- ✓ Full UK Driving License
- ✓ Use of own reliable vehicle
- ✓ Knowledge of Social Housing
- ✓ Foundation Degree in Arboriculture level 5 (or equivalent)
- ✓ Knowledge of bat legislation
- ✓ Tree Risk Assessments
- ✓ ROSPA Inspection Certification