

Asset Stock Condition Surveyor

Grade

F

Contract Type

Regional Worker

Asset Planning & Investment Manager



Asset Survey Manager



Asset Stock Condition Surveyor

Department

Asset Management → Strategy/Sustainability

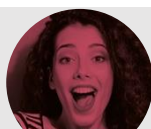
Role Overview

Support the development of Your Housing Group's long-term asset management strategy and investment programme, carrying out stock condition and other property surveys and building assessments.

RESPONSIBILITIES

- Carry out stock condition surveys and a range of other building surveys and assessments including but not limited to HHSRS (Housing Health & Safety Rating System), Energy Efficiency assessments, environmental/estate surveys, plant & equipment audits and general building surveys to provide accurate, robust and timely data to support the development of asset strategies, policies, and investment plans
- Support the development of an effective rolling stock condition survey programme.
- Take Ownership of data management through managing survey programme data including timely updates to YHG systems including Keystone.
- Ensure ownership of data and information held by the Group, that informs business planning and decision making, is accurate; providing robust, timely updates based on technical building knowledge.
- Working with regional client teams and property colleagues and assist with preparation of project proposals, including option appraisal, feasibility studies, planned investment reports, and specific defect reports.
- Proactive identification and capture of property related issues, considering the customer group's needs while also providing recommendations for interventions based on sound, technical experience.
- Support the asset handover process by carrying out site survey, reviews of handover documentation and effective liaison with development colleagues.
- Support the development of standard operating processes, policies, and quality frameworks to ensure consistency and deliver continuous improvement.
- Support the development of strategies, policies and plans by providing technical expertise on a range of building issues and challenges to deliver the YHG vision and business plan.
- Undertake additional duties appropriate to the role and/or grade.

Our Values & Competencies



PASSION



PRIDE



CREATIVITY



ACCOUNTABILITY

Creating more places for people to thrive and be recognised as a sector leading landlord

STRENGTHS

- ✓ Strong problem-solving skills with the ability to apply technical knowledge to resolve practical issues
- ✓ Self-motivated with excellent attention to detail
- ✓ Clear and articulate communication skills, both written & verbal
- ✓ Excellent IT skills with proficiency in Microsoft Office
- ✓ Ability to work autonomously with minimal supervision
- ✓ Excellent relationship building skills

ESSENTIAL REQUIREMENTS

- ✓ Knowledge of building surveying approaches and best practise
- ✓ Knowledge of UK Housing regulations, legislation and best practice including HHSRS & Decent Homes
- ✓ Understanding of strategic asset management including asset lifecycle, planning and asset data management
- ✓ Sound understanding of Health & Safety & compliance issues in relation to building services and construction
- ✓ Wide experience of carrying out a range of building surveys and assessments including stock condition, Decent Homes, HHSRS and Energy Efficiency assessments
- ✓ Educated to A level standard or level 4 qualification (HNC/NVQ4) equivalent and/or relevant technical qualification or experience

BENEFICIAL TO THE ROLE

- ✓ Full UK Driving License
- ✓ Use of own vehicle
- ✓ Social Housing experience
- ✓ Experience with Orchard Housing and Civica Keystone Asset Management/CX
- ✓ Relevant technical qualification (or working towards) e.g. RICS or CIOB accredited HND or degree level qualification
- ✓ Domestic Energy Assessor Accreditation